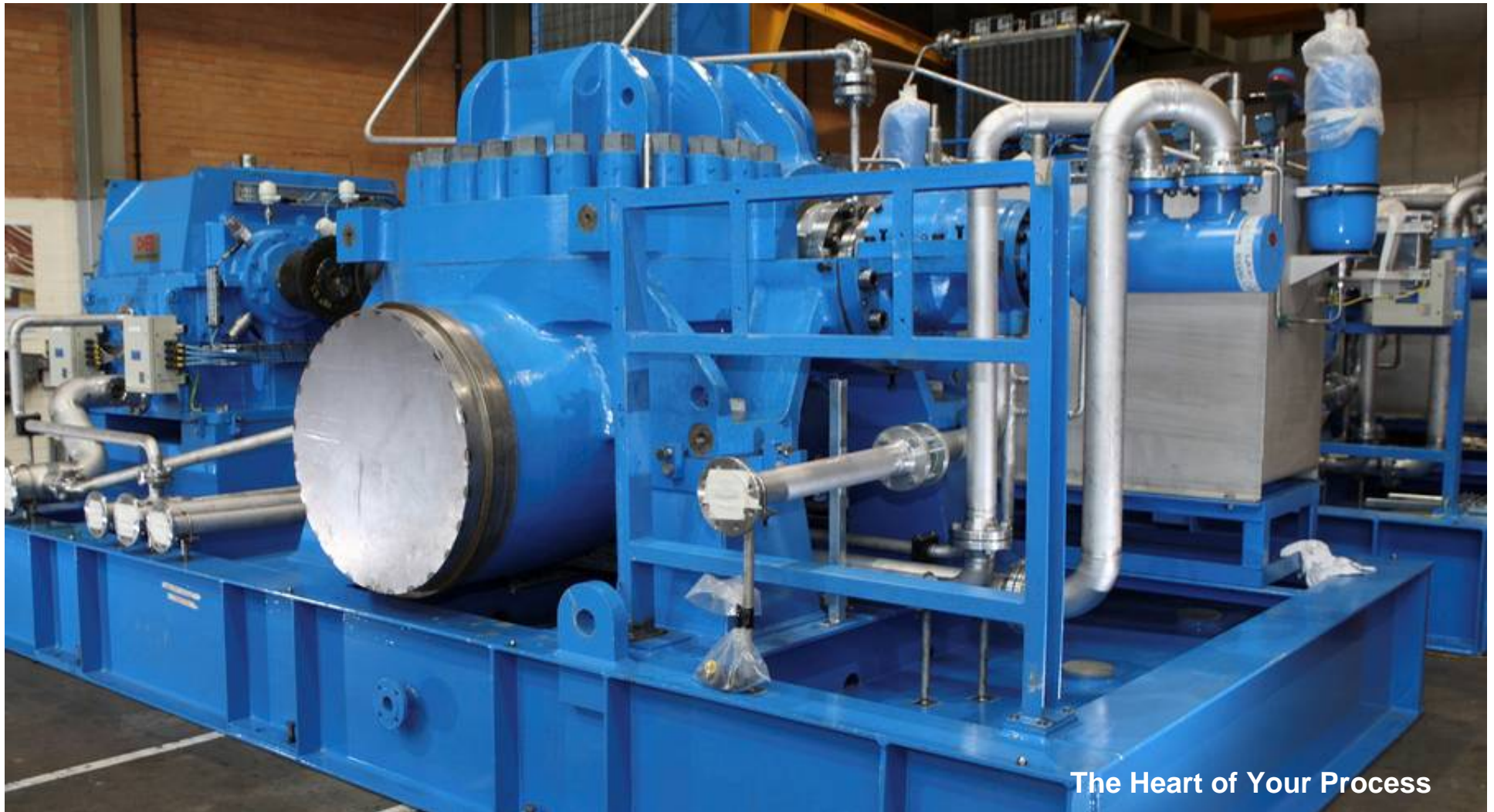


SULZER

HPDM Axially Split Volute Casing Pumps

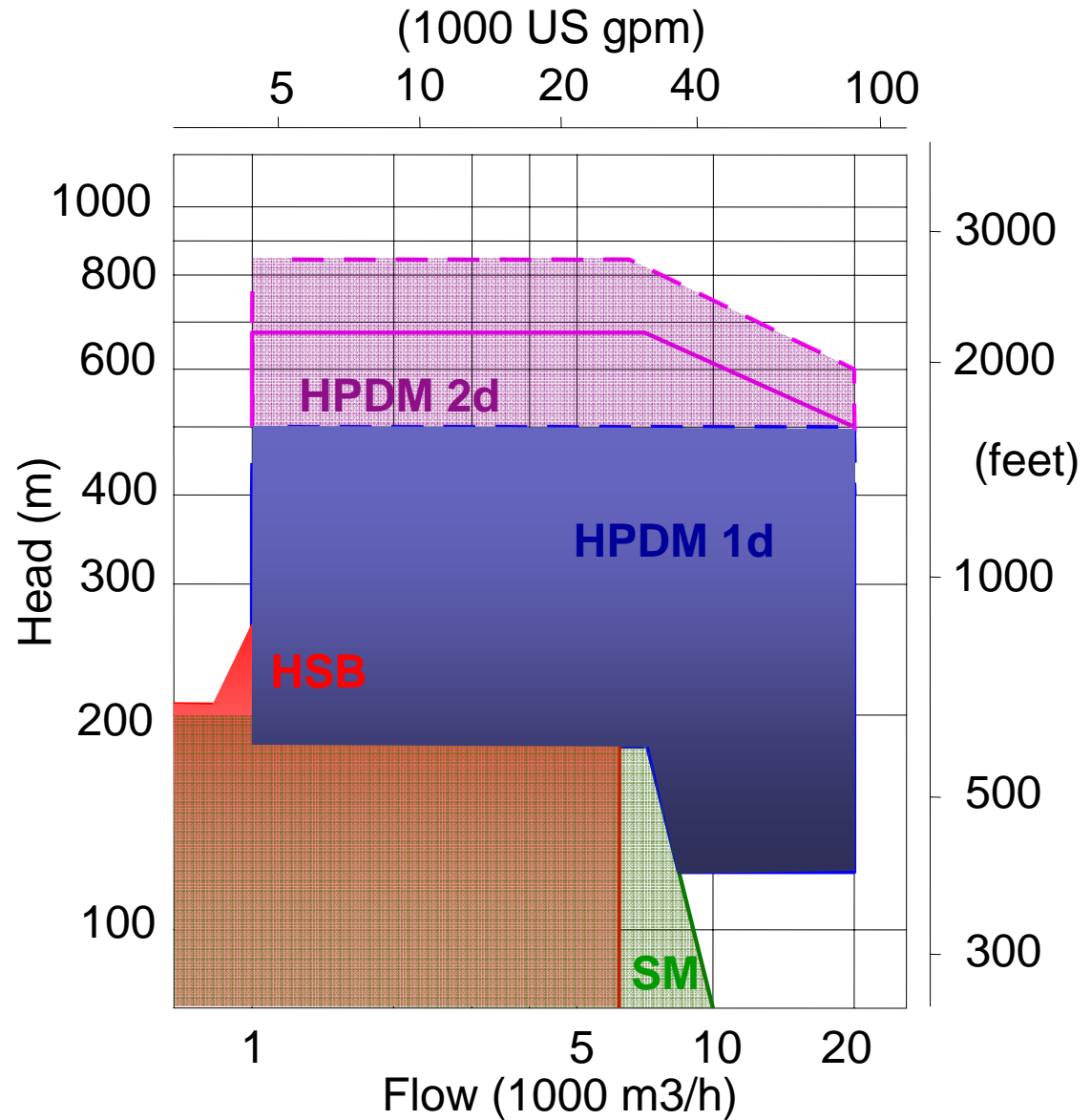
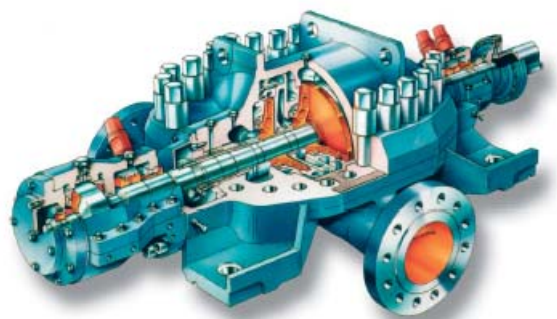
Sulzer Pumps



The Heart of Your Process

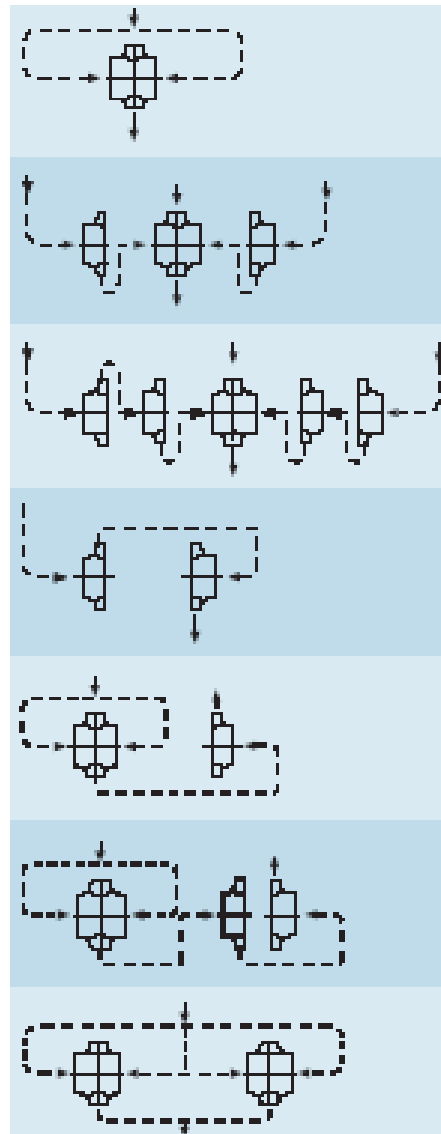
HPDM

Range Chart



HPDM

Impeller
arrangement



1d

2d

3d

s + s

d + s

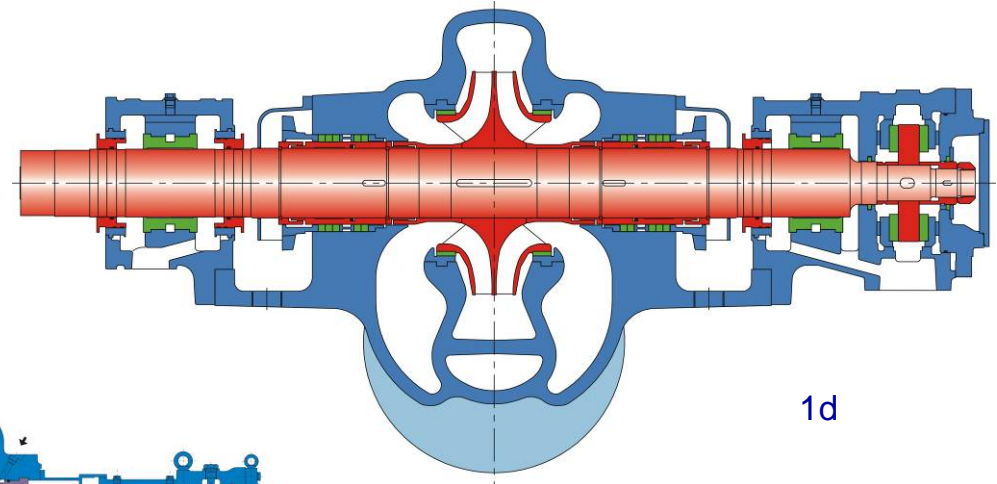
D + 2s

2D

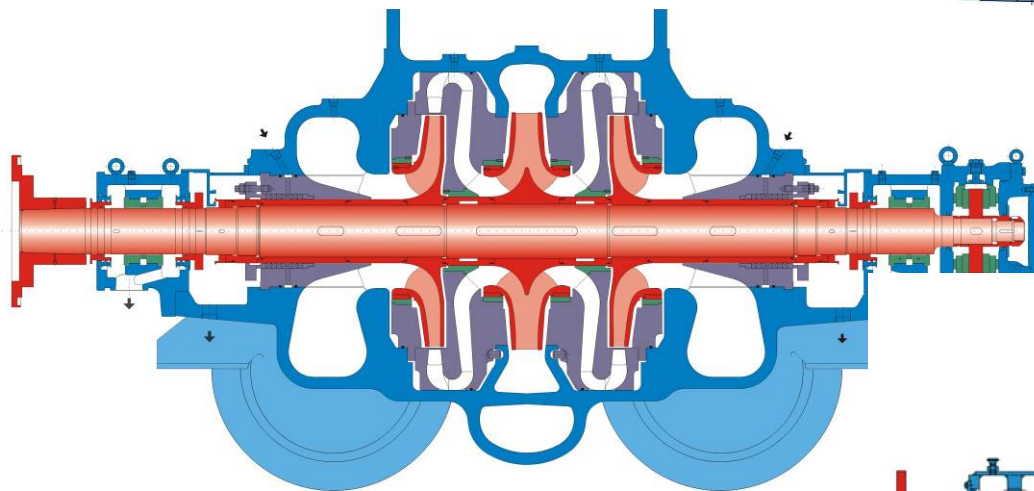


HPDM

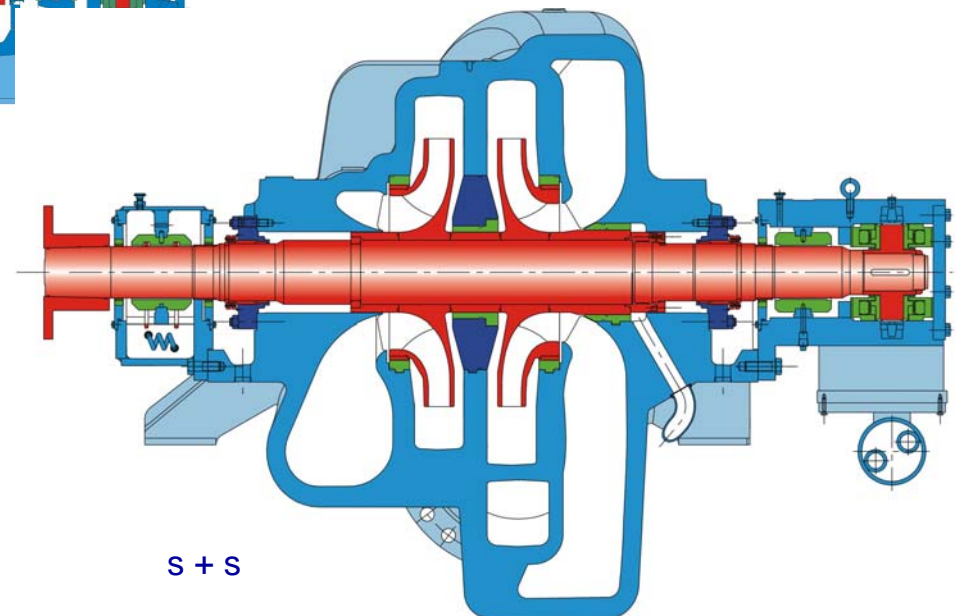
Designs



1d



2d

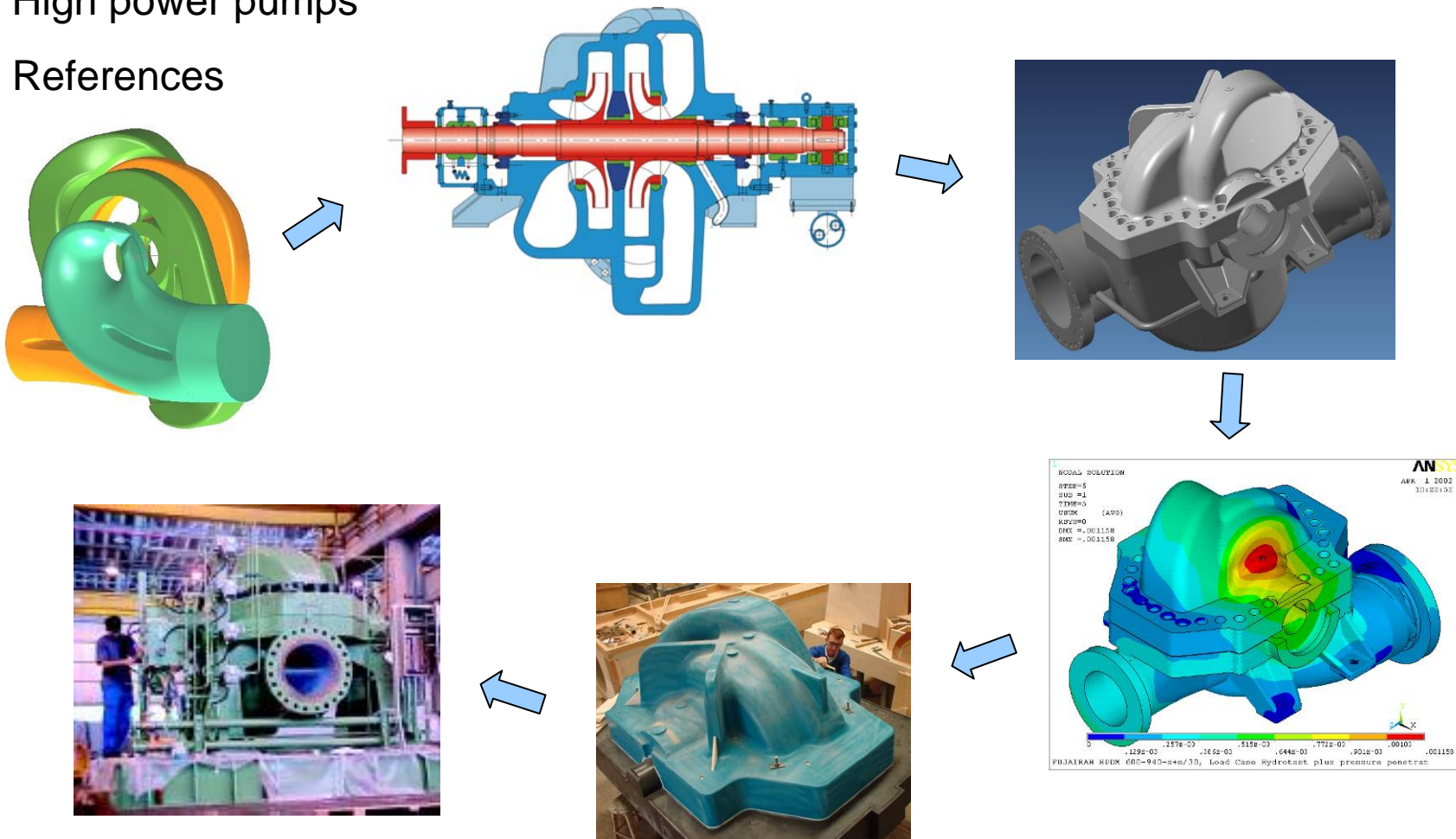


S + S

HPDM

Sulzer's Strength

- Highly engineered pumps designed to customers requirements
- High power pumps
- References



HPDM

Main Design Data

Service	Water	Oil
Hydraulics	nq11.3 (582) to nq42.1(2170)	
Case design	Axially split with gasket	
Bolting	Cap nuts with hydraulic tightener & Super Bolt	
Design Standards	Sulzer	API 610
Shaft seal	Packing gland & MS	Mechanical seal
Bearing arrangement	Antifriction & forced feed journal / thrust	
Max. Design pressure	for..1d → 150 bar (2175 psi)	
	for..2d → 100 bar (1450 psi)	
Max. Design temperature	50 °C (122F)	
Max. Power	so far up to 18MW	

Makkah Taif Water Transmission System

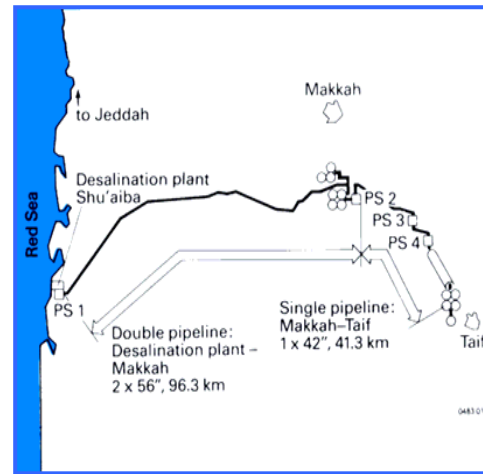


Water Supply System for Mecca and Taif (Saudi Arabia)

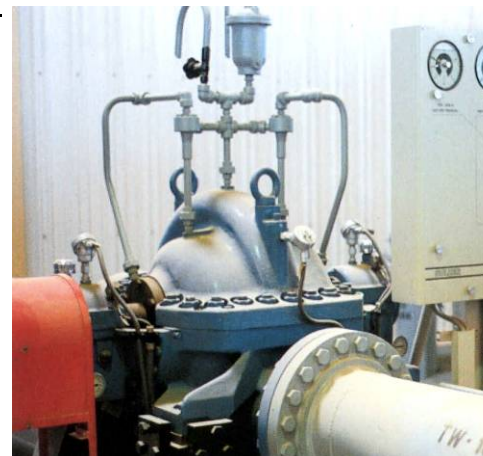
Operator: SWCC (Saline Water Conversion Corp.), Riyadh, Saudi Arabia

Ordered by: Al Rashid/Hak Consortium, Riyadh, Saudi Arabia

Planning: ILF, Innsbruck Austria



Pump type	Q (m ³ /h)	H (m)	P (kW)
8 x HPDM 300-600	1'782	70	397
8 x HPDM 250-375	1'782	485	2'732
4 x HPDM 250-425	1'332	340	1'448
4 x HPDM 250-420	1'332	575	2'449
4 x HPDM 250-420	1'332	645	2'748



Water Supply System Cutzamala, Mexico-City, Mexico

Operator : CAVM (Comisión de Aguas del Valle de México)

Ordered by: CAVM

Planning: CAVM and Ipesa Consultores S.C., México



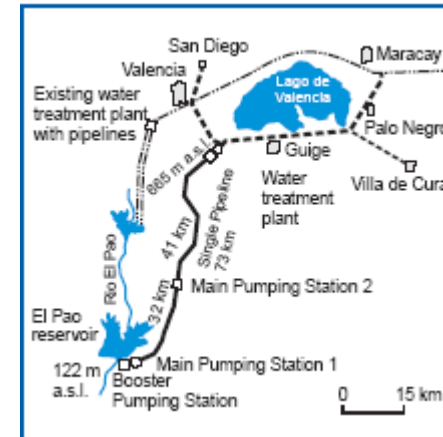
Pump type	Q(m ³ /h)	H(m)	rpm	P(kW)
11 x HPDM 750-945-1d/37	14400	160	1200	6930
6 x HPDM 800-865-1d/46	14400	122	1200	5370
12 x HPDM 700-1010-2d/33	14400	350	1200	15390
3 x HPDM 500-620-1d/38	6120	158	1800	2990
3 x HPDM 450-710-1d/29	5760	213	1800	3780



Water Transport System El Pao La Balsa, Venezuela

Operator: Hydrocentro
 Ordered by: INOS
 Planning: INOS and sub-consultants

Pump type		Q(m ³ /h)	H(m)	rpm
<u>P(kW)</u>				
6 x HPDM 600-830-3d/36	8100	350	1200	8500
3 x SMV 802-1030-1d/36	8640	47	590	1226



One of the three vertical booster pumps, type SMV 802-1030-1d/36, installed in the booster pumping station.