

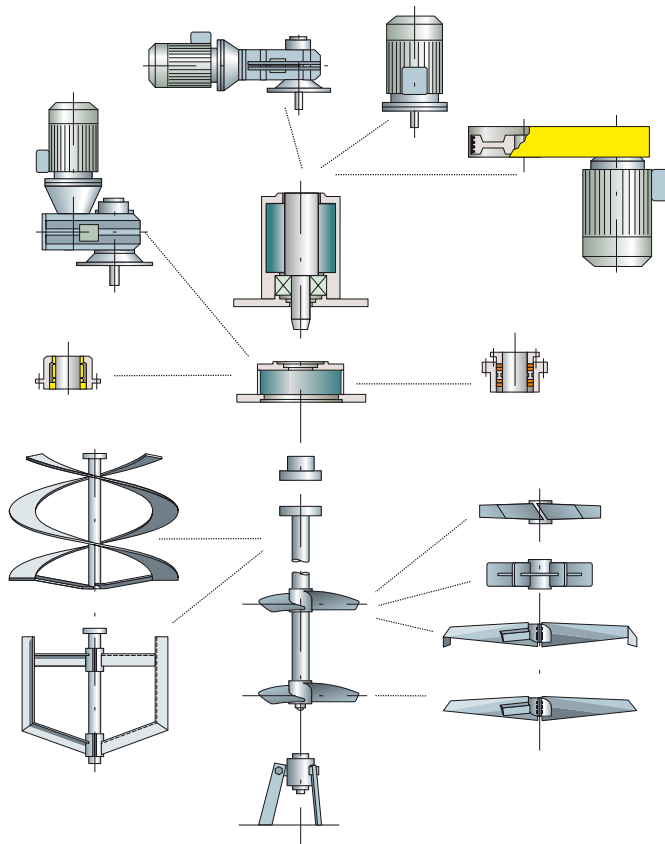
Sulzer Pumps SALOMIX® Vertical Agitator



The SALOMIX® Modular System – the Flexible Way to Optimize Dimensioning

The modular SALOMIX® system is a flexible way to dimension and manufacture agitators for a vast variety of processes and industries with value-added features for excellent agitation performance.

The right impeller type and configuration of single or multilevel paddles, propellers, turbines, dissolver discs, anchors etc. are selected to control the different types of mixing operations and process needs.



Superior agitation power for

- Storage tanks
- Production vessels
- Reactors
- Dissolvers
- Fermenters

Features

- Made of standard modules
- Compact design
- Construction tested in numerous applications
- Optimized dimensioning based on experience

Customer benefits

- Economical, short delivery time
- Easy to assemble
- No downtime, proven process result
- Required agitation intensity with minimum energy consumption

Sealing

The sealing solution is designed according to the demands of the process. The criteria considered are the presence of vacuum or overpressure, hazardous gases, temperature or requirements for sterile or aseptic conditions.

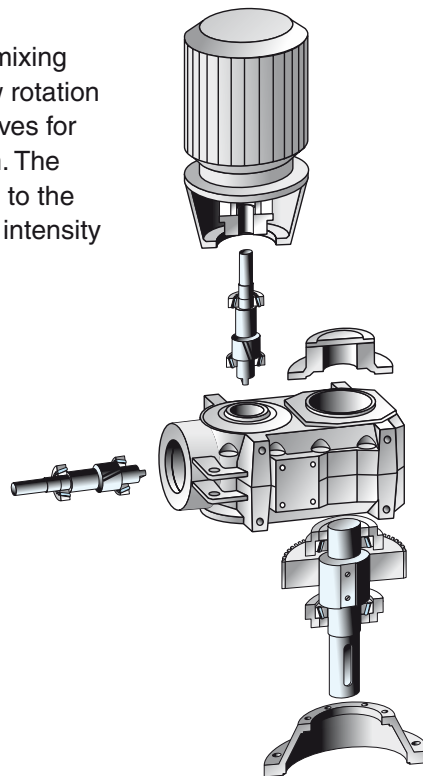
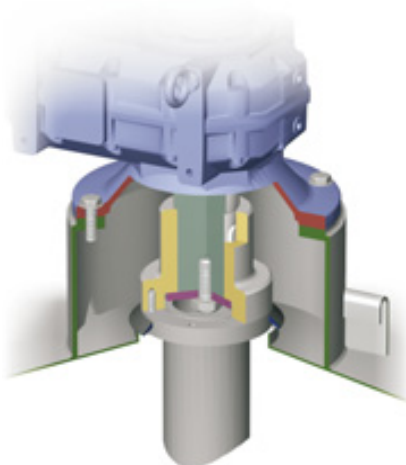
Based on these requirements, Sulzer Pumps can supply different sealing solutions:

- Gland packing stuffing box
- Single/double mechanical seals
- Special seals

If no seal is needed, the agitator is mounted by bolts directly on the counter flange of the tank.

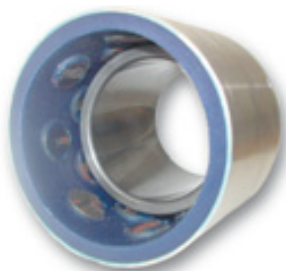
Gear drive, belt drive

Gear drives, designed specially for mixing purposes, are used mostly with slow rotation speeds, below 150 rpm, and belt drives for faster rotating mixers, up to 900 rpm. The rotation speed is selected according to the impeller type used and the agitation intensity needed by the process in question.

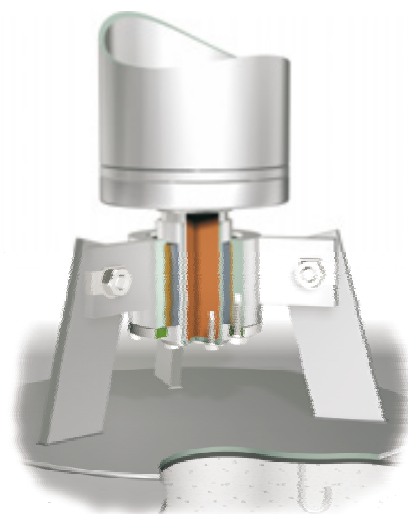


Bottom supports of long shafts

A bottom support is used with long shafts to optimize both the gear selection and the strength and stiffness of the shaft with simultaneous light-weight construction.



Special wear-resistant inserts for the bottom support.



Standard bottom support.

Applications

- To suspend solids, liquids or gases
- To dissolve solids in liquid
- To equalize concentrations
- To blend miscible liquids
- To keep slurries homogeneous
- To prevent sedimentation

Agitator properties

- Single or multilevel impellers
 - propellers Ø 90-1600 mm
 - paddles Ø 600-6000 mm
 - turbines Ø 150-600 mm
 - anchors Ø 900-2500 mm
 - LD/HD discs Ø 100-800 mm
- Power range 1-400 kW
- Shaft lengths 1-24 m
- Gear or belt drive
- Seal according to process demands



Check our worldwide offices at
www.sulzerpumps.com