

SULZER

Sulzer Pumps

世界石油和天然气行业泵的引领者
**The World Leader in Pumps for the
Oil and Gas Industry**



The Heart of Your Process



世界石油和天然气行业泵的引领者

专业

苏尔寿泵在石油和天然气领域的成功是建立在我们独一无二的克服技术障碍的能力，并提供性能可靠的高质量设备的基础上的。坚持公司树立的培养世界最优秀的工程师的基本原则是我们取得这些成功的关键。这反映在苏尔寿泵为石油天然气行业提供的产品组合和服务，无论是从理念到设计、制造、测试、安装，还是可靠的运作支持。

可靠性

苏尔寿泵产品在石油和天然气领域的可靠性举世皆知。无论是油气开采、管道输送、液化天然气还是任何其它的上游应用方面，苏尔寿泵在首次开车、可靠性和便于维护等方面都有着良好的信誉，不断得到顾客的称赞。

我们开创性的技术为世界上首台高能量注水泵安全作业40000小时提供了保障。苏尔寿 HPcp 泵的合计装机容量超过1000兆瓦，累计运行时间超过100万小时，产品可运行率高达99%。

研究与创新

在石油天然气行业中，苏尔寿泵业不断地刷新自己的世界纪录。苏尔寿一系列的世界第一是独一无二的。自二十世纪八十年代生产出世界上最大功率的离心式筒袋泵之后，我们又研制出27兆瓦的注水泵，功率比先前的纪录提高了50%。苏尔寿同时也生产了世界上最高压力——605 bar的离心式注水泵，现在我们的设计能力已经允许为客户提供超过800bar压力的产品。除了世界上压力最高的轴向剖分注水泵之外，苏尔寿还制造了世界上最大的多相泵和液化天然气输出泵，并进行了世界上最大功率的海底泵的开发，这些都明确表明了苏尔寿泵是该领域当之无愧的技术引领者。

全球布局

苏尔寿泵业在全球拥有15个制造工厂，60多个服务中心和众多的区域公司，从最初可行性研究和前期设计，到运行、翻新和产品升级，苏尔寿为我们的客户提供全方位的支持。苏尔寿泵全球业务和企业文化帮助我们达到我们的终极目标：使我们的客户更具有竞争力。

未来

新的油田矿藏往往位于环境恶劣的偏远地区。随之而来的是对注水和多相增压应用的压力和流量要求不断增加，再加上地处荒无人烟之处，所有这些先决条件使得泵的可靠性至关重要。

为适应这些新兴的海底应用工况，要求技术进一步发展。洲际管道将原油输送到港口或者炼油厂。为保证原油输送能力，降低维护费用，在偏远地区的、无人操作的泵站必须要能可靠运行。苏尔寿泵业不断地致力于发展新的产品来应对这些挑战，同时一以贯之地保持产品的可靠性。



World Leader in Oil and Gas Pump Applications

Expertise

Sulzer Pumps' success in Oil and Gas is based on our unique ability to push back technical barriers and provide reliable high quality equipment. This is achieved by the fundamental principles nurtured by the company to develop the world's finest engineers in their respective fields. This experience is seen throughout the Oil and Gas disciplines within Sulzer Pumps: From the concept phase through to design, manufacture, testing, installation and dependable operational support.

Reliability

Sulzer Pumps' reliability in Oil and Gas applications is renowned across the world. Should this be production, pipeline, LNG or any other upstream process, Sulzer Pumps products have earned a reputation for first time start-ups, availability, reliability and ease-of-maintenance and receive frequent compliments from our customers.

Our ground-breaking technology led to the world's first 40,000 hour life guarantee on a high energy injection pump in operation. With over 1,000 MW installed power and more than 1,000,000 operating hours, Sulzer HPcp pumps deliver 99% availability for their operators.

Research & Innovation

Sulzer Pumps continues to create world records in the Oil and Gas business and our list of firsts is un-equaled. Having produced the world's most powerful centrifugal barrel pumps in the 1980's, we later broke our own record by 50% with injection pumps rated at 27MW. We also delivered the

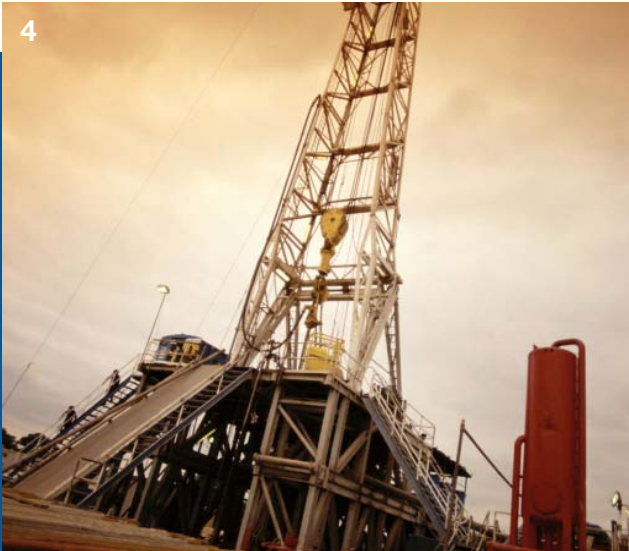
world's highest pressure centrifugal injection pumps at 605 bar discharge pressure with designs now available for over 800 bar. Add to this the world's highest pressure, axially split injection pump, the world's largest multiphase pumps and LNG send-out pumps, and development work on the world's highest power subsea pump and it is clear Sulzer Pumps is the technical leader in its field.

Presence

With 13 Sulzer Pumps manufacturing plants located around the globe, over 60 service centers and numerous regional locations, we are positioned to support our customers from the first exploration and FEED stage through to operations, retrofits and upgrades. Our global presence and culture help us achieve our ultimate goal: making our customers more competitive.

Future

New oil deposits are being found in ever more aggressive or remote environments. The ongoing need for increased pressures and flow rates in injection and multiphase boosting applications, coupled with the challenges of underdeveloped production locations, makes pump reliability critical. Emerging subsea applications for these duties are demanding a further step forward in technology. Intercontinental pipelines transport crude oil to shipping ports or refining centers. Remote, unmanned pumping stations must operate reliably if excessive maintenance costs and capacity restrictions are to be avoided. At Sulzer Pumps we are committed to continuously developing products to meet these challenges while maintaining the legendary reliability of our equipment.



苏尔寿的世界第一

- 1975 世界上第一台双相不锈钢注水泵
Sonatrach - 阿尔及利亚 - 13 台
- 1977 世界上最大的注水泵
沙特阿美 - 15.7 兆瓦 - 2 台
- 1981 世界最大的注水泵。
Sohio - 阿拉斯加 - 18.8 兆瓦 - 2 台
- 1984 世界最大的海上平台注水泵
Zadco - 阿布扎比 - 14.2 兆瓦 - 1 台
- 1992 世界最大的立式注水泵
Statoil - 挪威 - 6.7 兆瓦 - 2 台
- 1994 世界最大的液化天然气输出泵
Botas - 土耳其 - 2,121 米 - 5 台
- 1999 世界最大的海上平台多相泵
Total - 英国北海 - 4.5 兆瓦 - 2 台
- 2000 世界最大的多相泵
Yukos Oil - 西伯利亚 - 6.0 兆瓦 - 2 台
- 2001 世界最高压力的注水泵
WBP - 墨西哥湾 - 605 Bar - 4 台
- 2002 世界最大的注水泵
AIOC - 里海 - 27 兆瓦 - 4 units
- 2007 世界最大的液化天然气输出泵
Zeebrugge - 荷兰 - 1.43 兆瓦 - 3 台
- 2008 世界最长的东西向输油管道
ESPO - 俄罗斯 - 14.5 兆瓦 - 24 台
- 2012 世界最高功率海底多相泵
样机 - 英国 - 3.2 兆瓦 - 1 台

Sulzer Firsts

- 1975 World's first duplex injection pumps.
Sonatrach - Algeria - 13 units
- 1977 World's largest injection pumps.
Saudi Aramco - 15.7 MW - 2 units
- 1981 World's largest injection pumps.
Sohio - Alaska - 18.8 MW - 2 units
- 1984 World's largest offshore injection pump.
Zadco - Abu Dhabi - 14.2 MW - 1 unit
- 1992 World's largest vertical injection pumps.
Statoil - Norway - 6.7 MW - 2 units
- 1994 World's largest LNG send out pumps.
Botas - Turkey - 2,121 m - 5 units
- 1999 World's largest offshore multiphase pumps.
Total - UK North Sea - 4.5 MW - 2 units
- 2000 World's largest multiphase pumps.
Yukos Oil - Siberia - 6.0 MW - 2 units
- 2001 World's highest pressure injection pumps.
BP - Gulf of Mexico - 605 Bar - 4 units
- 2002 World's largest injection pumps.
AIOC - Caspian Sea - 27 MW - 4 units
- 2007 World's largest LNG send out pumps.
Zeebrugge - Netherlands - 1.43 MW - 3 units
- 2008 World's largest East to West oil pipeline.
ESPO - Russia - 14.5 MW - 24 units
- 2012 World's highest power subsea multiphase pump
Full size prototype - UK - 3.2MW - 1 unit



响应您的流程需求 The Answer to Your Process Needs

石油生产

石油生产需要依靠高效可靠的泵来注水，另外还包括主输油管线，海水提升，消防和其它一些相关的辅助应用。苏尔寿泵业世界领先的创新设计一直处于该领域发展最前沿，从而保证一直走在由原油生产发展带来的对新产品需求的前面。最新的进展包括适应海底作业的注入和多相泵应用。

浮式生产储油卸油船 (FPSO)

位于深海和远离海岸线的未开发水域石油的开采引导了 FPSO 船的发展。FPSO 用设备有自身发展的要求，包括要求紧凑的安装空间、要适应露天甲板环境和需要考虑船只本身的运动等。苏尔寿泵业为 FPSO 提供的产品充分考虑到这些特殊要求，采用革新设计理念为 FPSO 提供性能可靠、紧凑的泵送设备。

管道

使用洲际间输油管道将原油和炼化产品从产地运到市场，它是现代世界能源运输基础设施的重要组成部分。苏尔寿输油管道泵高效运行，以最大程度降低能源损耗，同时提供高度可靠性。苏尔寿泵的用户遍及全球，之所以选择苏尔寿是因为我们的客户明白，使用苏尔寿泵可以保证他们的输油管道按照设计要求经济且又可靠地长期运行。



Oil Production

Oil production depends on efficient, reliable pumps for injection, main oil line, seawater lift, fire fighting and associated auxiliary applications. Sulzer Pumps is at the forefront for delivering ground breaking designs that keep the state-of-the-art ahead of the demands of new oil production developments. Latest developments include subsea injection and multiphase designs for sea floor operation.

Floating Production, Storage and Offloading (FPSO)

Deepwater and remote offshore locations in undeveloped areas have led to the growth in use of FPSO production vessels. FPSO applications bring their own set of demands including compact installation space, open deck environment and ship movement to contend with. Sulzer Pumps' range of products for FPSO addresses these needs with innovative design solutions to provide reliable, compact FPSO pump systems.

Pipelines

Transporting crude oil or refined products in pipelines across continents from production centers to market is a key part of the modern world's energy distribution infrastructure. Sulzer pipeline pumps are highly efficient to minimize energy consumption whilst being extremely reliable. Sulzer pumps are installed all over the world, chosen by operators who know they can depend on them to reliably and economically maintain their pipelines at full flow.



天然气

天然气产品，尤其是液化天然气产品，正在快速扩展。苏尔寿有适合输送液化天然气的低温泵系列产品，且专注于为新一代的液化天然气终端建造特大型高压输出泵。

多相应用

多相泵被越来越多地使用以提高油井产量。苏尔寿的螺旋轴流式 MPP 泵是此项技术的核心设备，当前世界上最大的陆地和海上平台多相泵都是苏尔寿的产品。最新的发展包括在井口直接增压的海底泵。

二氧化碳

随着二氧化碳被用来作为注入介质或被存储在废弃井下的应用日渐增多，二氧化碳的采集、运输和存储成为正在发展的新兴市场。苏尔寿泵业在该市场也有很强的影响力，可提供的产品有二氧化碳管道输送和高压注入泵。



Gas

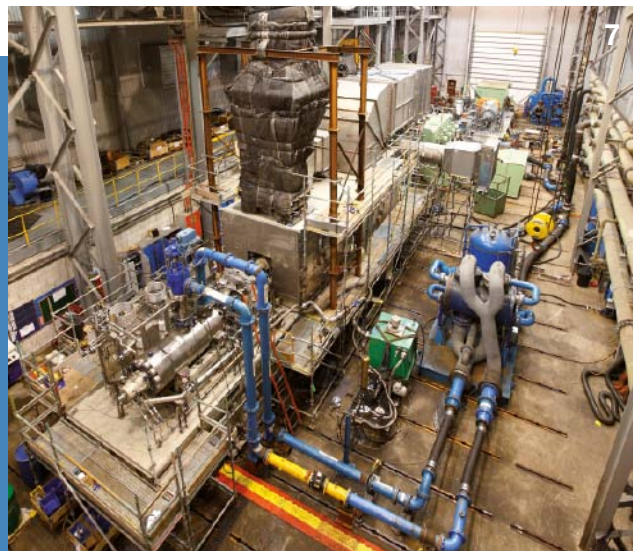
Gas production, and in particular Liquefied Natural Gas (LNG), is expanding at a rapid rate. With a range of cryogenic pumps suitable for pumping LNG, Sulzer specializes in building ultra large high pressure send out pumps for the latest generation of LNG terminals.

Multiphase

Multiphase pumping is increasingly used to boost well production. Sulzer helico-axial MPP pumps are used at the heart of such developments and currently represent the largest onshore and offshore multiphase installations in the world. Latest developments include a subsea version of the pump for direct boosting at the well head.

CO₂

Capture, transportation and storage of CO₂ is a developing market with CO₂ being used as an injection medium or stored in depleted wells. Sulzer Pumps is active in this field supplying CO₂ pipeline transportation and high pressure injection pumps.



世界最好的生产和测试设施

The World's Best Production and Testing Facilities

为了更贴近客户，苏尔寿泵业几乎在每大洲都有生产基地。美国、英国和巴西的工厂致力于提供石油和天然气行业全系列产 品。所有苏尔寿泵业的生产基地都已经取得 ISO9001:2000 质量管理体系认证以及 ISO 14001 和 OHSAS 18001 认证。

测试能力

苏尔寿泵业的所有制造厂都拥有性能优越的测试设施，有能力完成泵及其辅助设备的性能测试，以保证现场顺利试车和开车。

例如，我们具有独一无二的燃气轮机驱动的整机测试台。苏尔寿已经提供了数百台燃气轮机驱动泵，并且认识到了发货前进行整机测试的必要性，我们有能力在自己的工厂内对高达 30MW 的燃气轮机驱动泵进行整机试验。苏尔寿有能力提供由电机、变频电机、柴油机和燃气轮机做为驱动机的整机测试来满足客户的高端要求。我们投资建设的最新海底泵测试平台为下一代海底泵的发展提供了平台。

To be close to our customers, Sulzer Pumps has production facilities on almost every continent. Our production sites in the UK, United States and Brazil are focused to offering a complete range of products for Oil and Gas applications. All Sulzer Pumps manufacturing locations have certified Quality Management Systems in place conforming to the requirements ISO 9001:2000 standard, as well as ISO 14001 and OHSAS 18001.

Testing Capabilities

Sulzer Pumps manufacturing plants all have excellent testing facilities, capable of demonstrating pump performance and proving the ancillary equipment to ensure smooth commissioning and start-up. One example is our unique in-house gas turbine string testing capabilities. Having supplied hundreds of gas turbine driven pumps, Sulzer is aware of the need to prove the full train prior to dispatch and has the capability to undertake string testing with gas turbine drivers up to 30MW within our own manufacturing environment. Our existing capability to string test electric motor, VFD, diesel and gas engine trains provides a high level of comfort to our clients. Our latest investment in a subsea testbed supports development of the next generation of subsea pumps.



苏尔寿泵业 英国 / Sulzer Pumps UK



苏尔寿泵业 美国 / Sulzer Pumps USA



苏尔寿泵业 巴西 / Sulzer Pumps Brazil



满足您的需求 Meeting Your Needs

安全，健康和环境

苏尔寿一直将安全、健康作为平常工作中的头等大事来抓。我们在所有的工作地点对安全生产进行月度的记录和评估，其中包括事故发生率和严重性。在整个公司范围内，我们的长期目标是将突发事故和问题的数量减少到零。

我们对健康和安全的关注也延伸到环境保护。苏尔寿泵充分考虑产品的整个寿命周期，进而降低其对环境的影响，帮助客户减少支出。苏尔寿泵的寿命周期评估包括产品的设计、制造、市场、包装、运输、运行、循环利用和处理。在此方面，我们将提供和服务一样严谨的评估方式。我们专注于了解对产品寿命周期产生影响的相关因素，包括生产过程中的能源消耗、材料使用和耗费等，并持续制定相应措施不断改善提高。

客户支持服务

使泵持续可靠高效运行是苏尔寿泵业客户支持服务部门的主要目标。依托于经验丰富的员工和专业的应用知识，我们将为您提供全方位的服务解决方案，保证您的泵正常运行。不论是提供备件还是泵的维护服务，我们都能够使您的工艺装置流畅地运行。我们分布在全球的工厂及 60 多个售后服务中心的售后服务专家将尽全力为泵及相关设备的稳定运行提供全面的保障。

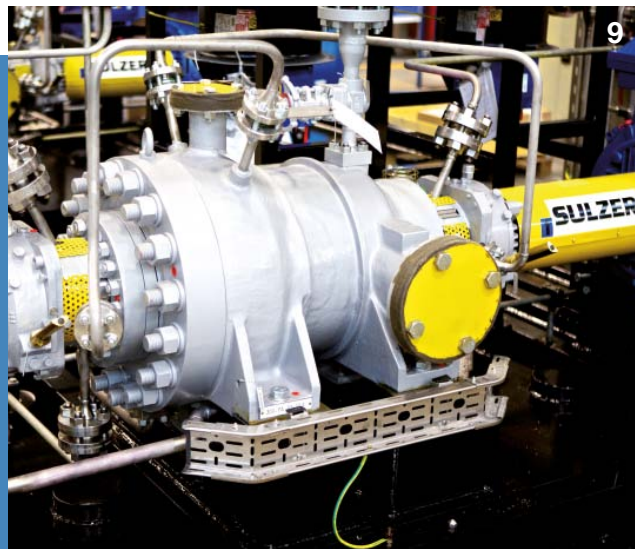
Safety, Health and Environment

Health and safety is a top priority for Sulzer Pumps, in our own operations and our work with you. We document and evaluate safety performance indicators, including accident frequency and severity, at all sites on a monthly basis. Any accident is one too many. Across the company our long-term goal is to reduce the number of occupational accidents and illnesses to zero.

Our concern for health and safety extends to the environment as well. Sulzer Pumps considers the total life cycle of its products to limit environmental impact and help lower costs. Sulzer Pumps' total life cycle analysis includes the design, manufacturing, marketing, packaging, transportation, operation, recycling, and disposal of the products. We apply the same rigorous evaluation to the way we provide services. We focus on identifying relevant influences on product life cycle efficiency, including energy consumption during production, material usage and costs, and continually take action to make improvements.

Customer Support Services

The continuous availability and high operating performance of pumps is the key target for Sulzer Pumps Customer Support Services organization. Through our highly experienced personnel and application knowledge, we provide you with a full range of service solutions to keep your pumps running. With services ranging in scope from supplying a spare part to operating the pump under contract, we are uniquely placed to make your process run smoother. Our service specialists based at either our manufacturing facilities or one of over 60 service centers around the world are dedicated to maintaining the performance of your pumps and associated equipment.



筒袋泵

Barrel Casing Pumps

HPc_p

ISO 13709 (API 610) BB5 径向剖分筒袋泵主要应用于注水与主输油管线领域，苏尔寿扭锁结构专利设计的应用最大限度地减轻了泵的重量。该泵代表了油气生产用高能量泵的最先进水平。世界上最大的陆地、海上平台，最高压力和立式注水泵应用都是 HPc_p 设计。

压力 **600+ bar / 8,700+ psi**

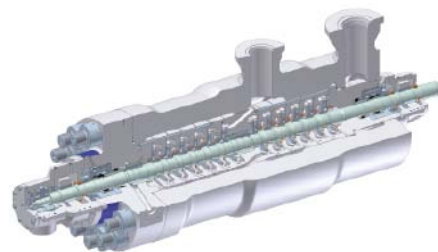
温度 **90 °C / 195 °F**

HPc_p

HPc_p ISO 13709 (API 610) BB5 radially split barrel pumps are used for injection and main oil line services. Using the Twistlock system of barrel closure to minimize weight, these pumps represent the state-of-the-art for upstream high-energy pumps. The world's largest onshore, offshore, highest pressure and vertical injection pumps are all HPc_p designs.

Pressure **600+ bar / 8,700+ psi**

Temperature **90 °C / 195 °F**



CP

CP 为 ISO 13709 (API 610) BB5 轴向剖分筒袋泵。可应用于石油开采中的注水和主输油管线。轴向剖分的泵结构，使得在维护保养时移出整个转子变得异常简单。该类型泵特别适合于低比重介质的工况，在这种情况下，叶轮背靠背的设计使得轴向力可以自然平衡，泵的中间衬套会对转子起到辅助的支撑作用。该类型泵结构上同样采用了扭锁结构设计。

压力 **410 bar / 6,000 psi**

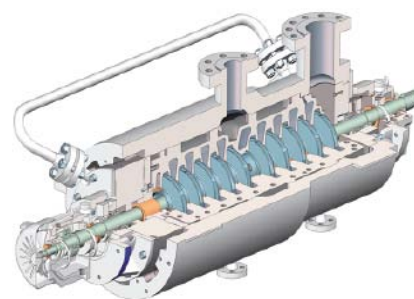
温度 **425 °C / 800 °F**

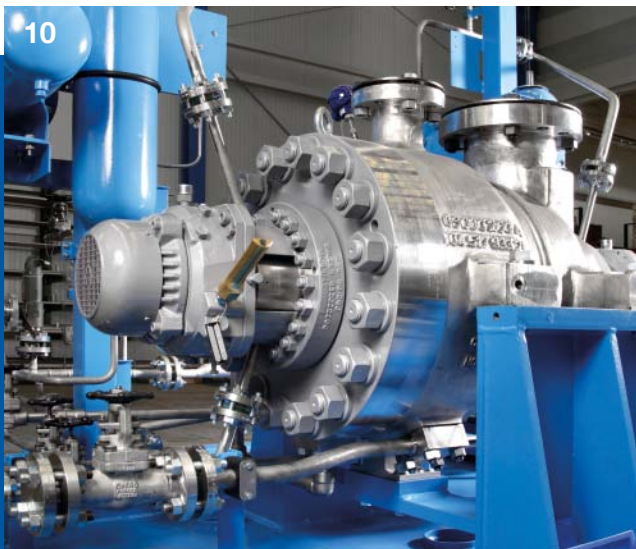
CP

CP ISO 13709 (API 610) BB5 axially split barrel casing pumps are used in oil production for injection and MOL applications. The axially split inner case makes removal of the complete rotor for maintenance a simple procedure. They are particularly suited to low specific gravity applications where the back-to-back design and center bush provide natural axial balance and additional shaft support. These pumps also utilize the Sulzer Twistlock design for the casing cover.

Pressure **410 bar / 6,000 psi**

Temperature **425 °C / 800 °F**





筒袋泵

Barrel Casing Pumps

GSG

GSG 系列泵是 ISO13709 (API 610) 标准的 BB5 结构的径向剖分筒袋泵。主要应用于石油开采中的注水和输油管线。在设计上对同步转速直接驱动的应用进行了优化以避免不必要以及昂贵的工程设计。完全集装式设计充分利用了苏尔寿专利扭锁结构的优点。可提供背对背安装结构的小流量高扬程设计。

压力 250 bar / 3,625 psi

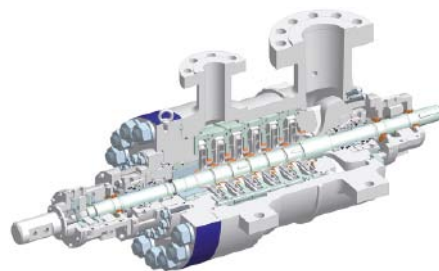
温度 425 °C / 800 °F

GSG

GSG ISO 13709 (API 610) BB5 radially split barrel casing pumps are used in oil production for injection and MOL applications. Their design is optimized for synchronous speed direct drive applications thus avoiding unnecessary and expensive construction features. Their full cartridge design makes the most of the compact Sulzer Twistlock system of barrel closure. A back-to-back low flow high pressure option is also available.

Pressure 250 bar / 3,625 psi

Temperature 425 °C / 800 °F



MPP

MPP 螺旋轴流式多相泵是石油和天然气生产领域革新的最新产品。这种泵允许介质含高组分的气体，进而避免了对分离系统的需求。世界上最大的陆地和海上应用多相泵全是苏尔寿的 MPP 设计。同时我们也在发展海底应用版本的多相泵。

压力 150 bar / 2,175 psi

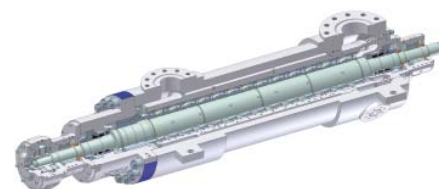
温度 175 °C / 350 °F

MPP

MPP helico-axial multiphase pumps are spearheading a revolution in oil and gas production. The pumps are able to operate with high gas fractions thus removing the need for separation systems. The world's largest onshore and offshore multiphase installations are Sulzer MPP designs with a subsea version in development.

Pressure 150 bar / 2,175 psi

Temperature 175 °C / 350 °F





轴向剖分泵 Axially Split Pumps

MSD

MSD ISO 13709 (API 610) BB3 多级泵广泛地应用于输油管线、注水等领域。经过验证通过的宽型谱范围的标准水力设计和采用标准模块的机械设计确保了与客户需求的最大契合。

压力 **310 bar / 4,500 psi**

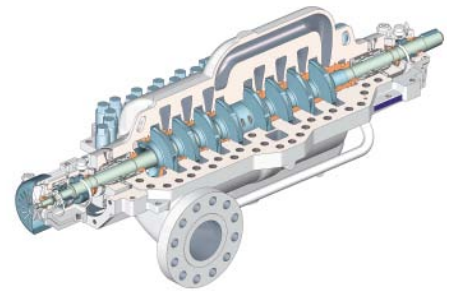
温度 **200 °C / 400 °F**

MSD

MSD ISO 13709 (API 610) BB3 multistage pumps are widely used in pipelines and water injection applications. The broad range of standard hydraulics and mechanical design options ensure an optimum fit to customers' duty requirements, using proven pre-engineered solutions.

Pressure **310 bar / 4,500 psi**

Temperature **200 °C / 400 °F**



HPDM

HPDM 为多级轴向剖分泵。适用于大流量、高扬程的传输应用。HPDM 泵独特的设计使其能提供高效率。该系列泵可用于向干旱缺水的内陆地区供水、注水，也可用作主管道泵。

压力 **150 bar / 2,200 psi**

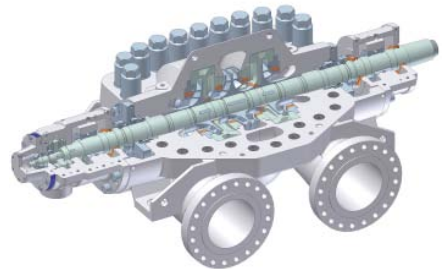
温度 **90 °C / 195 °F**

HPDM

HPDM multistage axially split pumps are designed for high volume, high pressure transport applications. HPDM pumps are individually designed to provide class-leading efficiency and are used to supply water for arid area inland injection applications as well as main pipeline pumps.

Pressure **150 bar / 2,200 psi**

Temperature **90 °C / 195 °F**





轴向剖分泵

Axially Split Pumps

HSB

HSB ISO13709(API610) BB1 双吸轴向剖分泵，为管线和一般重工况辅助应用而设计。加强型设计适合同步和高速运行的工况条件。

压力 30 bar / 435 psi

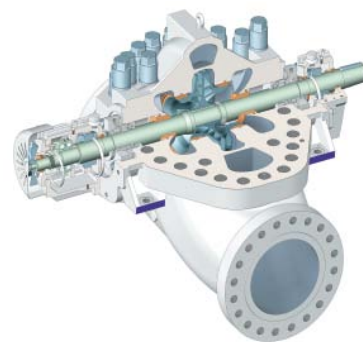
温度 160 °C / 320 °F

HSB

HSB ISO 13709 (API 610) BB1 double suction axially split pumps are designed for use in pipeline and general heavy duty auxiliary applications. Their robust design is suitable for both synchronous and high-speed operation.

Pressure 30 bar / 435 psi

Temperature 160 °C / 320 °F



SMH

SMH ISO13709(API610) BB1 设计，可用于增压、传输、消防和低压辅助应用。特别对于上游应用，可提供加强型设计。

压力 30 bar / 435 psi

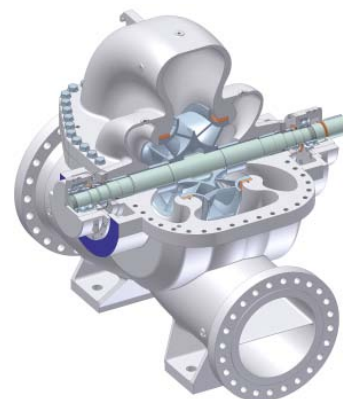
温度 160 °C / 320 °F

SMH

The SMH ISO 13709 (API 610) BB1 compliant design is used for boosting, transfer, firefighting and low pressure auxiliary applications. The pre-engineered range provides robust design options specifically intended for upstream applications.

Pressure 30 bar / 435 psi

Temperature 160 °C / 320 °F





单级泵和双级泵

Single and Two Stage Pumps

OHH

OHH ISO 13709 (API 610) OH2 型，用作工艺流程和增压泵。该泵满足最新版 API 和 ISO 标准。设计的关键在于它利用最少的型号跨度要求达到了最宽广的水力性能覆盖范围。这意味着不论什么样的工况，都能有更高质量的选择。

压力 **50 bar / 725 psi**

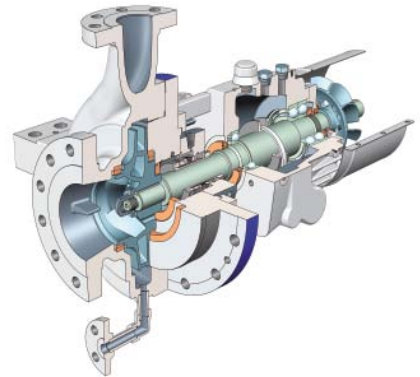
温度 **425 °C / 800 °F**

OHH

OHH ISO 13709 (API 610) OH2 pumps are designed for process and boosting applications. The pump already meets the requirements of the latest generation of API and ISO standards. Key to the design is the widest hydraulic performance coverage on the market coupled with the smallest size steps. This means better quality selections no matter what the duty.

Pressure **50 bar / 725 psi**

Temperature **425 °C / 800 °F**



BBS

BBS ISO 13709 (API 610) BB2 这种泵主要在辅助工艺和增压应用中使用。能适应大范围的压力和温度变化的能力，使得它在最艰巨的环境中也能提供长时间无故障的服务。双吸叶轮特别适合低 NPSHa 工况使用。

压力 **100 bar / 1,450 psi**

温度 **425 °C / 800 °F**

BBS

BBS ISO 13709 (API 610) BB2 pumps are primarily used in auxiliary process and booster applications. The broad pressure and temperature capabilities of this design allow it to be used in the most arduous situations while still providing long and trouble free service. The double entry impeller is particularly suited to low NPSHa duties.

Pressure **100 bar / 1,450 psi**

Temperature **425 °C / 800 °F**





单级泵和双级泵

Single and Two Stage Pumps

CPT

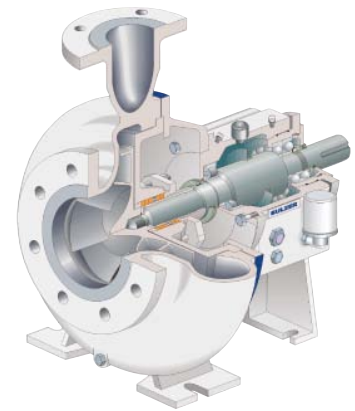
CPT ANSI B73.1 标准工艺泵为紧凑、经济型产品，坚固耐用。特别为复杂工艺及其辅助工况而设计。相对 ISO13799 而言，CPT 在不牺牲质量和耐用性的前提下降低了成本。标准使用材料广泛，包括双相不锈钢，提供了超常的使用寿命和高可靠性。

压力 **16 bar (25 bar) / 230 psi (360 psi)**
 温度 **260 °C / 500 °F**

CPT

CPT ANSI B73.1 process pumps offer rugged construction in a compact and economic package. Designed specifically for arduous process and auxiliary duties, the CPT allows considerable savings to be made vs ISO13799 designs without sacrificing quality or durability. A wide range of standard materials of construction including duplex stainless steels provide extended operating life and high levels of reliability.

Pressure 16 bar (25 bar) / 230 psi (360 psi)
Temperature 260 °C / 500 °F



BBT/BBT-D

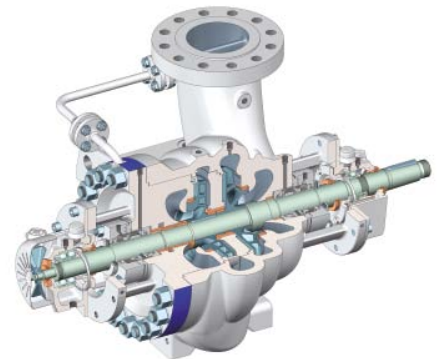
ISO 13709(API610)BB2 背对背两级叶轮设计可用于工艺中要求高扬程的地方。大的密封腔适合安装 API682 密封。标准可选项包括为低汽蚀工况设计的双吸叶轮。

压力 **100 bar / 1,450 psi**
 温度 **450 °C / 840 °F**

BBT/BBT-D

These ISO 13709 (API 610) BB2 back-to-back two stage pumps are designed for process applications where higher heads are required. The design features large seal chambers able to accommodate API 682 seals. Standard options include a double entry suction option for low NPSHa duties in the BBT-D.

Pressure 100 bar / 1,450 psi
Temperature 450 °C / 840 °F





立式泵 Vertical Pumps

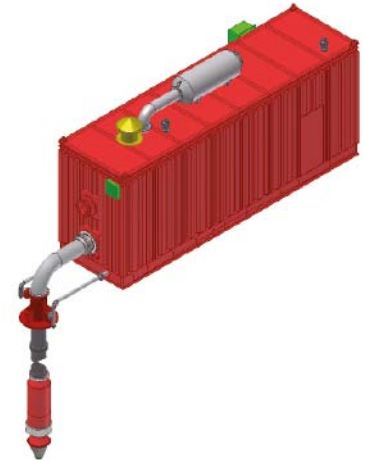
液压驱动消防泵

苏尔寿液压驱动消防系统包括由液压马达驱动的立式潜水泵。采用集装箱式模块化框架设计，上面装有柴油驱动机、增压泵、液压动力单元，以及该单元运行需要的燃料和其他系统。由于没有采用通过外部 90 度齿轮箱来驱动的长轴泵，也不采用高压电缆带电动潜水泵的方式，使得该装置在有紧急情况发生时仍然十分可靠。
压力 30 bar / 435 psi
温度 60 °C / 140 °F

Hydraulic Drive Fire Pumps

The Sulzer Pumps hydraulic drive fire fighting system consists of a submersible lift pump driven by a hydraulic motor. A self contained, containerized module supports a diesel drive, booster pump, hydraulic power unit, fuel and all other systems required to operate the unit. The absence of external 90° gearboxes for lineshaft pumps or the HV electric cables associated with electro-submersible solutions makes them extremely robust in an emergency situation.

Pressure 30 bar / 435 psi
Temperature 60 °C / 140 °F



SJD (API)

SJD ISO 13709(API610) VS6 立式筒袋泵，这种泵是系统 NPSH_a 受限时的理想选择。该泵被广泛应用于诸如管道车站的增压泵等一系列工作场合。该泵的低温系列产品可使其在很低温度下工作。该泵坚固的结构设计以及广泛的水力范围使它们成为工艺中关键工位用泵的理想选择。
压力 150 bar / 2,150 psi
温度 205 °C / 400 °F

SJD (API)

The SJD ISO 13709 (API 610) VS6 range of vertical can pumps is ideal for applications where NPSH_a is restricted. The pumps are used in a wide range of applications and services including booster pumps in pipeline pumping stations. Low temperature variants are available for cryogenic applications. Their robust construction and wide hydraulic range make them ideally suited to process critical applications.

Pressure 150 bar / 2150 psi
Temperature 205 °C / 400 °F



大连苏尔寿泵及压缩机有限公司
大连市双 D 港双 D7 街 6 号
总机 +86 (0) 411 8758 1888
订货 +86 (0) 411 8758 1738
备件 +86 (0) 411 8758 1864/1865
售后 800890 9528
传真 +86 (0) 411 8758 1878-8738
邮编 116600

苏州苏尔寿泵业有限公司
苏州新区建林路 433 号
总机 +86 (0) 512 8187 3888
传真 +86 (0) 512 8187 3591
邮编 215151

www.sulzerpumps.com

北京分公司
北京市建国门内大街 7 号光华长安大厦
2 座 1618-19 室
电话 +86 (0) 10 6510 1777/1781
传真 +86 (0) 10 6518 5011
邮编 100005

上海分公司
上海市虹桥路 3 号港汇中心
2 座 2102 室
电话 +86 (0) 21 6448 5060
传真 +86 (0) 21 6448 5061
邮编 200030

广州办事处
广东省广州市天河区林和西路 9 号
耀中广场 1914-1915 室
电话 +86 (0) 20 3810 5611
传真 +86 (0) 20 3810 5612
邮编 510610

西安办事处
陕西省西安市高新技术产业开发区
科技路 33 号
高新国际商务中心 2206 室
电话 +86 (0) 29 8833 7458
传真 +86 (0) 29 8833 7458 - 8866
邮编 710075

成都办事处
四川省成都市武侯区科华北路 62 号
力宝大厦 1008 室
电话 +86 (0) 28 8528 3691/3693
传真 +86 (0) 28 8528 3692
邮编 610041

苏尔寿泵业上海技术服务中心
上海市浦东新区合庆镇
东川公路 5587 号
电话 +86 (0) 21 5897 3801
传真 +86 (0) 21 5897 3803/3605
邮编 201201

苏尔寿泵业广州技术服务中心
广州市花都区新华街新华工业区
红棉大道 48 号 2 号厂房
电话 +86 (0) 20 8687 9058
传真 +86 (0) 20 8687 9558
邮编 210800

Sulzer (Dalian) Pumps & Compressors Ltd.

No.6 DD 7th Street, DD Port
Dalian 116600
Tel. +86 (0) 411 8758 1888
Order Tel. +86 (0) 411 8758 1738
Parts Order Tel. +86 (0) 411 8758 1864/1865
CSS Tel. 800 890 9528
Fax +86 (0) 411 8758 1878-8738

Sulzer Pumps Suzhou Ltd.

No.433, Jianlin Road, Suzhou New District,
Suzhou 215151
Tel. +86 (0) 512 8187 3888
Fax +86 (0) 512 8187 3591

Beijing Branch

Room 1618-19, Tower 2,
No.7, Bright China Chang An Building,
Jian Guo Men Nei Dajie,
Beijing, China 100005
Tel. +86 (0) 10 6510 1777/1781
Fax +86 (0) 10 6518 5011

Shanghai Branch

Room 2102, 2 Grand Gateway,
No.3 Hongqiao Road,
Shanghai, China 200030
Tel. +86 (0) 21 6448 5060
Fax +86 (0) 21 6448 5061

Guangzhou Office

Room 1914-1915, China Shine Plaza,
No.9, Lin He Xi Road, Tianhe District,
Guangzhou, Guangdong China 510610
Tel. +86 (0) 20 3810 5611
Fax +86 (0) 20 3810 5612

Xi'an Office

Room 2206, Gaoxin Interational
Business Center
No.33 Keji Road, Gaoxin High-new
Technology
Development District,
Xi'an, Shaan'xi China 710075
Tel. +86 (0) 29 8833 7458
Fax +86 (0) 29 8833 7458 - 8866

Chengdu Office

Room 1008, LIPPO Tower
No.62 Kehua North Road, Wuhou District,
Chengdu, Sichuan China 610041
Tel. +86 (0) 28 8528 3691/3693
Fax +86 (0) 28 8528 3692

Shanghai Service Center

No.5578, Dongchuan Road,
Heqing Pudong New Area
Shanghai, China 201201
Tel. +86 (0) 21 5897 3801
Fax +86 (0) 21 5897 3803/3605

Guangzhou Service Center

No.48,Hongmian Road, Xinhua
Industrial Area, Xinhua Street, Huadu
District, Guangzhou, China 210800
Tel. +86(0)20 8687 9058
Fax +86 (0)20 8687 9558



E00607 zh en 1.2012 (300), 版权所有©苏尔寿泵业

这本样本只是个概概介绍, 它不提供任何种类的授权和担保。如想要获得我们产品授权和担保的描述, 请与我们联系。此中的所有信息 在没有通知的情况下会随时更改。

This brochure is a general presentation. It does not provide any warranty or guarantee of any kind. Please, contact us for a description of the warranties and guarantees offered with our products. Directions for use and safety will be given separately. All information herein is subject to change without notice.